

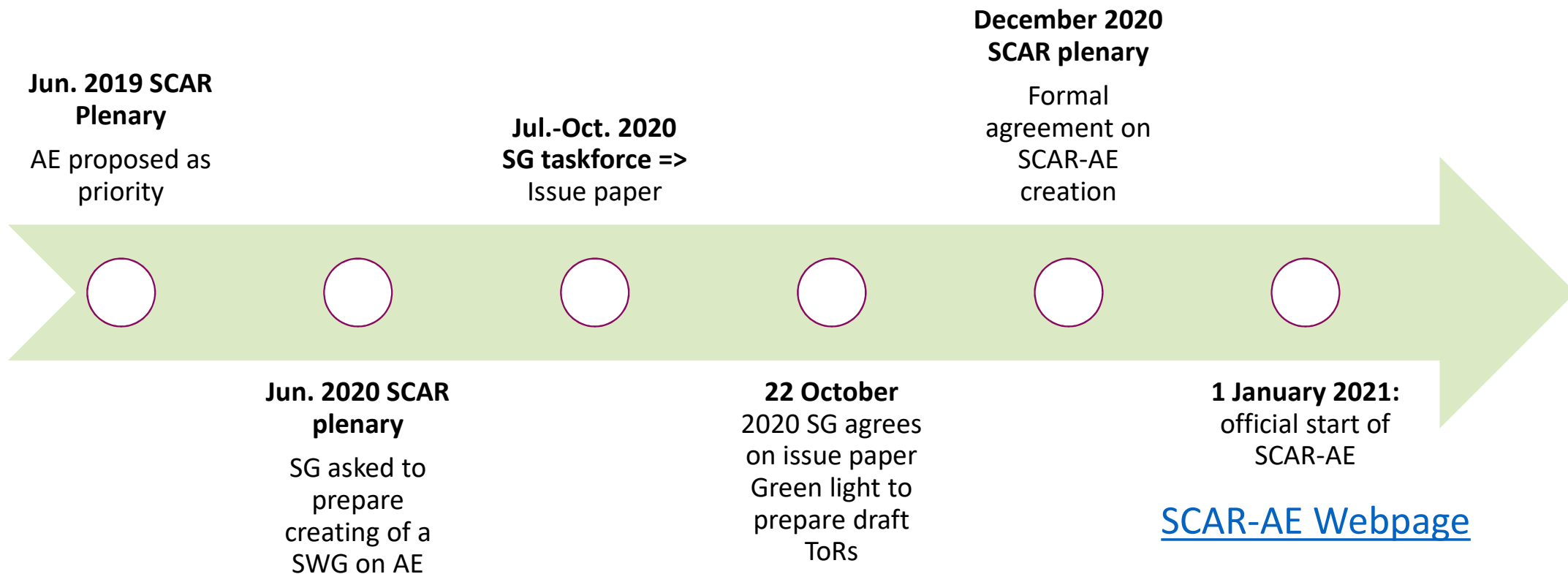
SCAR Strategic Working Group (SWG) on Agroecology (SCAR-AE)

SWG SCAR AKIS 5 - 6th Meeting; Online, 1st – 2nd June 2021

SCAR-AE: A look in the past...

- 2019 June and December SCAR Plenary: topic on agroecology was proposed as key priority
- 2020 July Plenary: asked the SG to start the preparation for a **SCAR working group on Agroecology**
- July-October 2020: SG Taskforce working on the issue paper
- 22 October: SG Meeting agreed on the content of the issue paper, gave green light for TF to develop draft ToRs and to put on agenda of SCAR Plenary
- November: TF & co-chairs developed draft ToRs
- December: formal agreement for **SCAR-AE** by SCAR Plenary
- SCAR-AE started on 01.01.2021: <https://scar-europe.org/index.php/mission-and-aims>

SCAR-AE: A look in the past...



Main Objective: Partnership “Accelerating farming systems transition: agroecology living labs and research infrastructures”

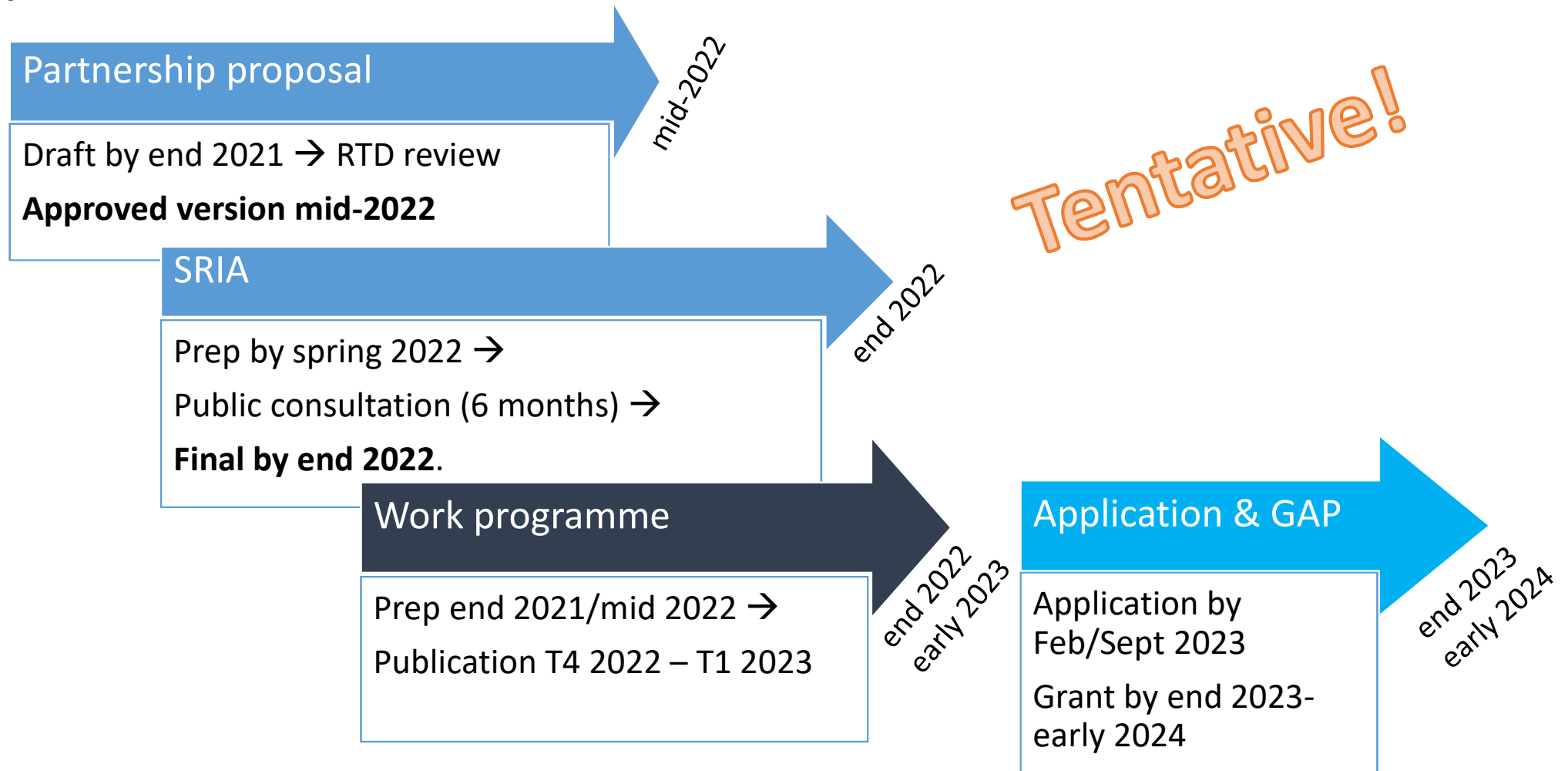
- Supporting **research policy development** for AE at national, EU and international levels
- **Fostering debate** and providing conceptual, methodological and practical **frameworks**
- **Alignment of activities** from the relevant entities by gathering and analysing their potential inputs and providing **advice to promote synergies and avoid duplication**
- Platform for continuous **strategic discussion**
- Short-term: “Partnership proposal” and SRIA

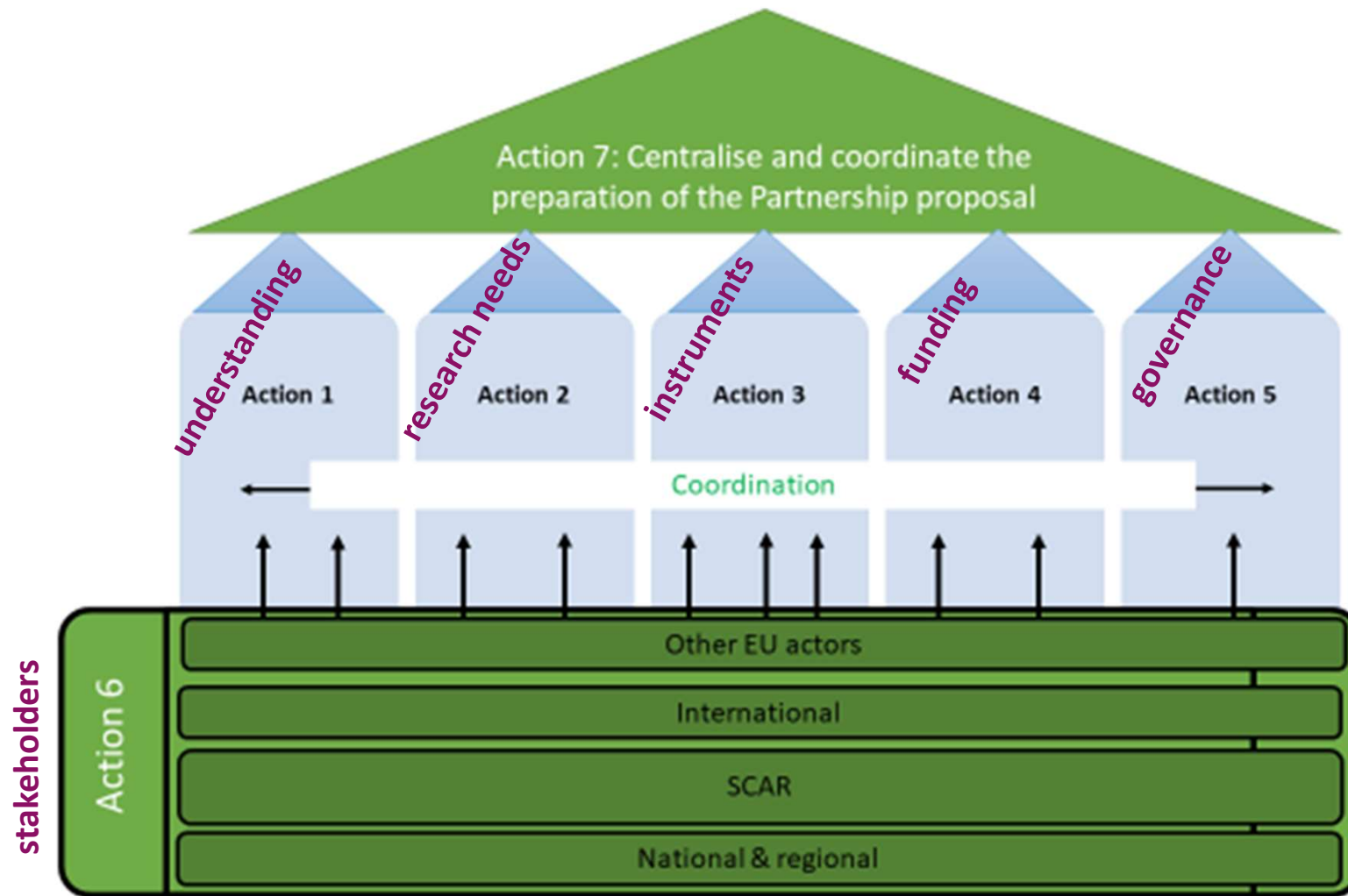
Rationale



- Climate agenda and SDGs -> need for more sust. Agri; role for AE?
- Policy, research and innovation agendas include AE approaches: FNSSA, FACCE, Green Deal (F2F+Biodiv.); SCAR foresight
- Partnership “Accelerating farming systems transition: agroecology living labs and research infrastructures” proposed by EC
- Funding rate of P: essential to attract MS/AC! -> SCAR
- Plenty of actors, at first rank ALL-Ready and AE4EU
- Also JPIs, ERA-NETs, Mission & SMS, other Partnerships, EIP, ETPs, regions, FAO....
- SCAR-AE centralises the preparation of the Partnership proposal
- Fluent communication with the relevant, appropriate and necessary sources of inputs to the Partnership

Timeline agroecology partnership preparation

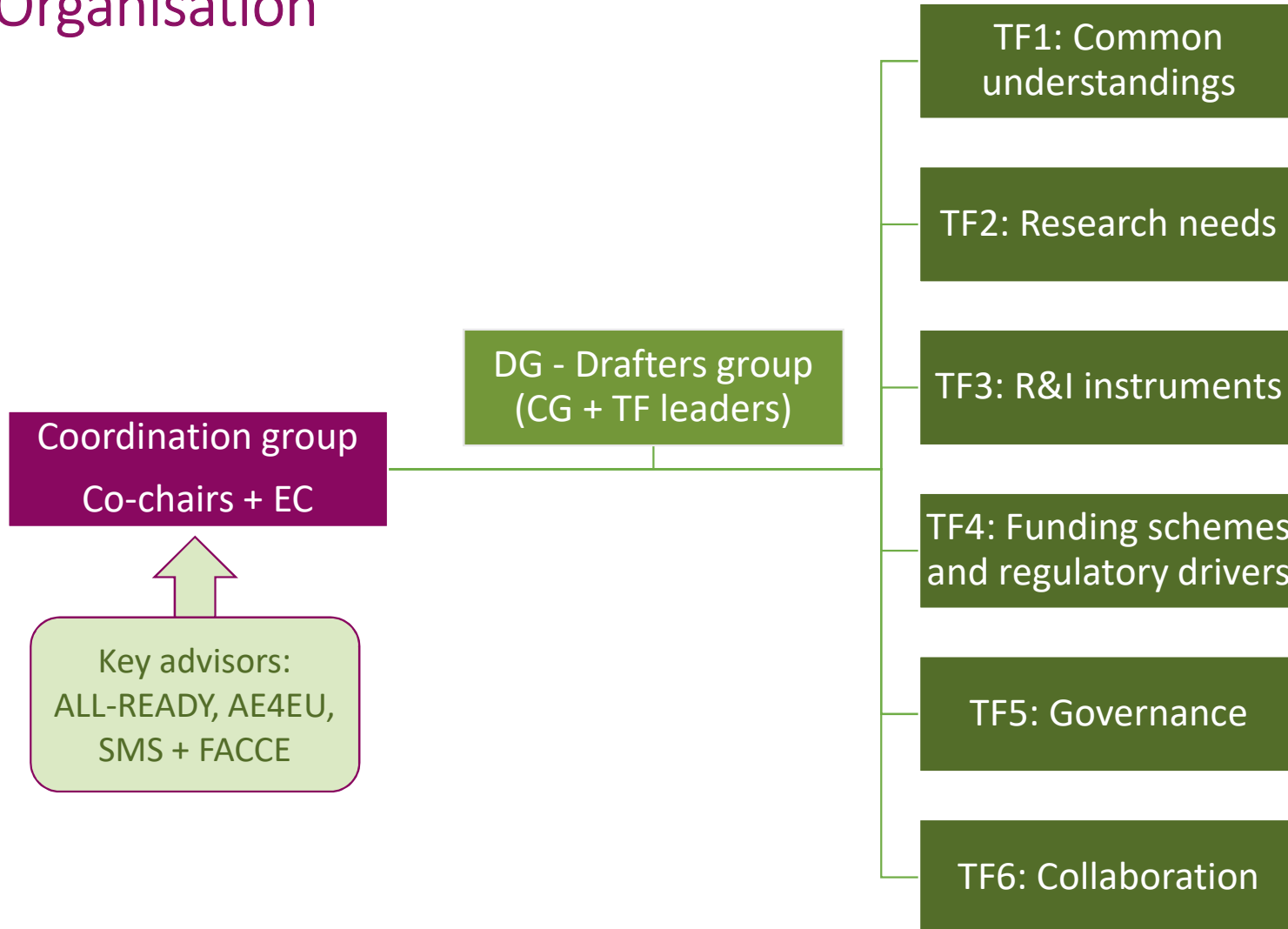




Organisation

- Coordination Group (CG): co-chairs + EC (DG AGRI): 6 meetings/ year
- Coordinators of ALL-Ready, AE4EU and SMS + 1 FACCE representative as key advisors at this “umbrella” level
- SCAR-AE = representatives of MS and AC + potential actors identified by Action 6: 3 meetings/year
- A Task Force for each action
- A “writing group” in charge of Action 7 (Target)
- Mandate: 01.01.2021-31.12.2023 (-> Partnership)
- Annual WP incl. perspectives for following year

Organisation



***1 taskforce per action (+
drafters group for A7)***

Annual work programme

Mandate 2021-2023

24 MS/AC + EU

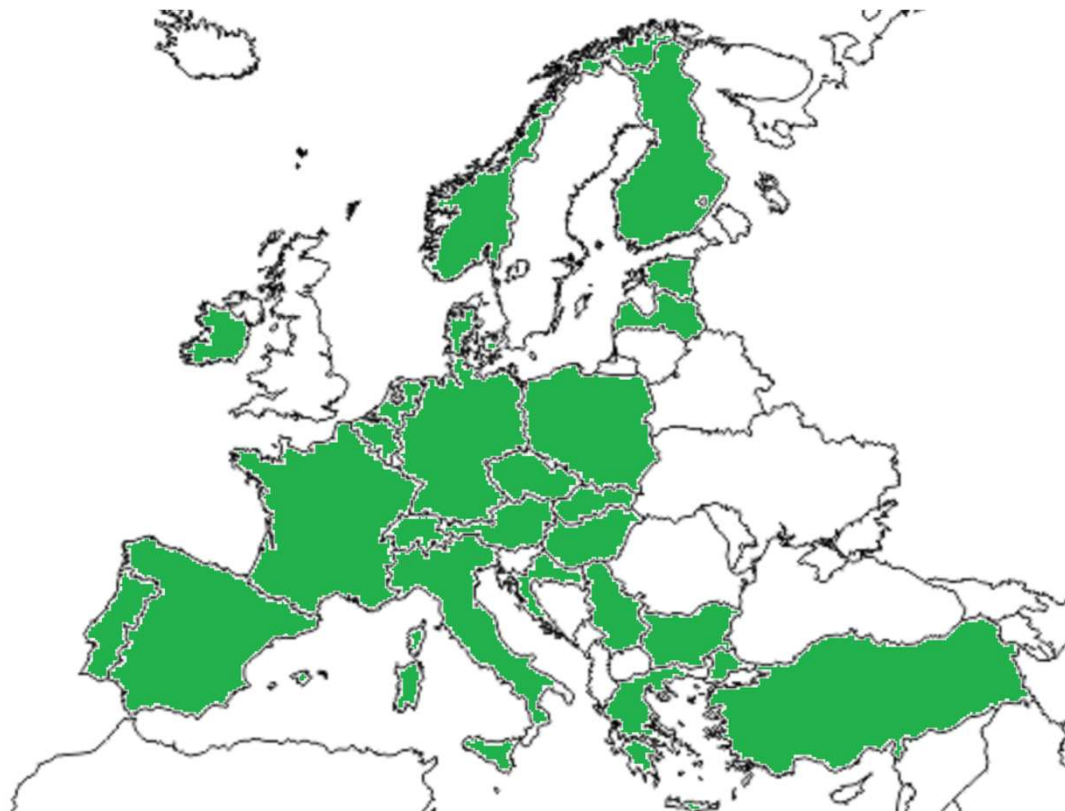
+ Key Advisors

ALL-Ready

AE4EU

SMS

FACCE-JPI



+ Observers:

All SCAR WGs invited

TP Organics

ERIAFF

CORE-Organic

FACCE SURPLUS

ICT-AGRI-FOOD

SusAn

COPA-COGECA

Part. Biodiv.

La Via Campesina

EEB

Animal Task Force

IBMA

EuroCoop

EnoLL

IFOAM

BIOEAST

Birdlife

Agroecology Europe

ETP Plants

in progress...

Action 1: Build a common understanding of AE, AE LLs and related RIs

- 21 members – co-leads: IE, NL, ES
- AE conceptual framework
- Identification of main tasks to be addressed throughout the agroecological transition:
 - Increasing farming-use efficiency of costly, scarce, or environmentally damaging inputs.
 - Replacing with nature-based solutions the current dependance of farming on fossil-fuels and/or environmentally damaging external inputs.
 - Scaling up organic and other sustainable-oriented ways of farming, currently practised at the plot and farm scale, integrating them into agroecology territories.
 - Diversifying, reintegrating, and regenerating complex agroecosystems able to shelter a great deal of biodiversity
 - Relocating closer to end consumers the current global value-added agri-food chains into shorter ones

Action 1: Build a common understanding of AE, AE LLs and related RIs

- Partnership framework:
 - LLs involving farming frontrunners plus many other stakeholders of the agri-food system
 - Multidisciplinary: Very wide range of scientific and technical disciplines.
 - Knowledge gaps identified:
 - Select, implement, and integrate nature-based solutions to reduce environmental impacts, suitable for each soil and climate conditions and socioeconomic contexts.
 - Feasible scenarios for integrated and circular Agroecology Territories (AT) suited to each biogeographical and site-specific condition.
 - Discover and implement practices integrating many site-specific agroecosystems in complex landscapes mosaics, and taking advantage of their synergies for improving farm-associated biodiversity, and the capacity to provide all sorts of ecosystem services.
 - R&I on Landscape Agroecology for the functional integration of different land and livestock uses that increase territorial efficiency
 - R&I to offset and overcome existing yield gaps at plot level between organic and industrial farming of most crops in the best soils.
 - Discover and implement business-type opportunities offered by shorter, nearer, and fairer value-added chains of the innovative agri-food system to be developed and integrated at different scales across the EU.
 - Innovative tools and indicators for the integrated evaluation, participative deliberation, and monitoring of the AET advance.
 - Governance of the new Agroecological transition (public policies and instruments).

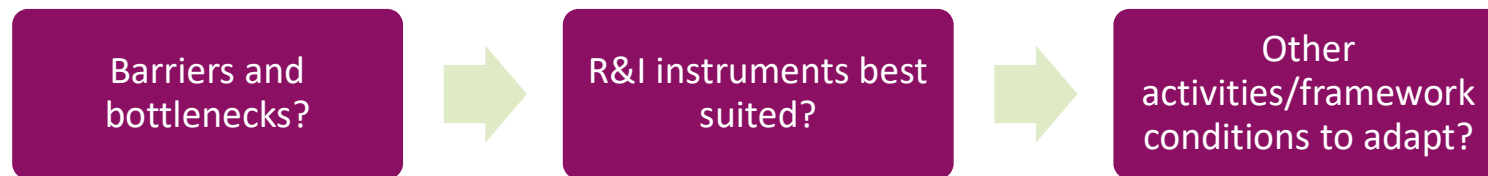
Action 2: Recommendations on agroecological research needs to be addressed in the Partnership



- 23 members – co-leads AT, ES
- R&I bottlenecks identified regarding:
 - Conceptual barriers
 - Methodological barriers
 - Data-related bottlenecks
 - Production, consumers and overall agrifood value chain
 - R&I systems
- R&I needs
 - Production (farm level)
 - Landscape and regional level
 - Valorization of AE-related ecosystem services
 - Integration in landscape food systems
 - Governance. Development of co-creation methodologies
 - Governance. Supporting the design of appropriate public policies, instruments and incentives.

Action 3: Recommendations on research and innovation instruments needed to test agroecology concepts and practices

- 24 members – co-leads RS, ES
- Requirements for AE LLs (e.g. criteria/indicators), infrastructures & instruments (waiting for input from TF1)
- Guidance how to monitor / performance
- Started with work on elements for the “intervention logic”



- State of play
 - Inputs collected (April-May) => Co-creation sessions (May-June)
 - Barriers and bottlenecks to boost agroecology explored at various levels: research, farmers, consumers, value chain operators, policy, communication
 - Discussion on-going on R&I instruments and other activities

Action 4: Recommendations on suitable funding schemes and regulatory drivers to promote the long-term (programmes and infrastructures) and short-term (projects) initiatives dealing with agroecology

- 13 members – lead FR
- Long-term & mid- or short-term
- EFRD & EAFRD -> role of regions!
- Overview of funding possibilities in the different countries in preparation

Action 5: Recommendation on the potential governance for the Partnership

- 14 members – co-leads IE, DE, FR
- ERA-NETs (cofund; “in cash”) / EJP (“in kind”)
- Probably more hands-on needed
- Governances from Partn. 1st wave considered
- How to mix both models? “Firewall” / Col
- How to include regions? Private? RPOs? Separate boards
- Stakeholders (interesting approach bottom-up)

Horizontal: Action 6: Collaboration with relevant actors

- Ensure appropriate inputs in the activities, outputs from the activities from and to the relevant target groups and further synergies
- Alignment in terms of timing needs to be done at the earliest stage
- Constant check (new actors emerging?)
- Four layers as basement/cement:
 - National and regional (mirror groups, National Contacts...)
 - SCAR and the SCAR Working Groups
 - International organizations and activities
 - Other relevant R&I EU actors
- Outcomes: (1) Cooperation and coordination with other relevant entities, in terms of appropriate inputs in the vertical actions of SCAR-AE and outputs from SCAR-AE to the relevant target groups. (2) Efficient coordination at national level. (3) Perspectives on Europe's role in international AE research agendas

Task Force 6 : Progress

- 14 members – co-leads DE, ES
- Address communities from webinars with contacts in SCAR-AE (maintain community)
- Share contact SCAR-AE <-> National Contacts for Partn.
- Guidelines for observers + invitations/management (engage in TF?)
- Reflexions on how to engage stakeholders in the future Part.
- On how to build on the existing initiatives (and therefore also role of synergies with SCAR WGs!!!)
- Project slams on 01.03.2021 (general), 10.05.2021 (H2020 projects), next 21.06.2021 (ERA-NETs & JPIs & EJPs). More to come (RI, etc...).

Time	Item	Who
09:30 – 09:40	Welcome	
09:40 – 09:50	Presentation of SCAR-AE	N. Tinois
09:50 – 10:25	Block 1 (4X5' each + Q&A) - ALL-Ready - SCAR SWG AKIS - EIP-AGRI - COPA-COGECA	- Muriel Mambrini - Pascal Bergeret - DG AGRI - Branwen Miles
10:25 – 11:00	Block 2 (4X5' each + Q&A) - AE4EU - TP Organics - CORE-Organic - ERIAFF	- Alexander Wezel - Maria Gernert - Ivana Trkulja - Fabio Boscaleri
11:00 – 11:10	Break	
11:10 – 11:45	Block 3 (4X5' each + Q&A) - SMS - FAO TAPE - EnoLL - SCAR SWG Food Systems	- Michael Loebmann - Anne Mottet - Koen Vervoort - Hugo De-Vries
11:45 – 12:20	Block 4 (4X5' each + Q&A) - FACCE-JPI - Partnership Biodiversity - EURAGRI - Climate-KIC	- Heather Mckhann - Xavier Le Roux - Bettina Heimann - Daniel Zimmer
12:20 – 12:30	AoB	

Time	Item	Who
09:00 – 09:10	Welcome	
09:10 – 09:20	Presentation of SCAR-AE	N. Tinois
09:20 – 09:50	Block 1 (3X5' each + Q&A) - A1: DiverIMPACTS & Crop Diversification Cluster - A2: ReMIX - A3: STARGATE	- Antoine Messean - Eric Justes - Dimitrios Moshou
09:50 – 10:25	Block 2 (3X5' each + Q&A) - B1: LEGVALUE - B2: TRUE - B3: DIVERFARMING - B4: BRESOV	- Frederic Muel - Pete Iannetta - Raul Zornoza - Ferdinando Branca
10:25 – 10:40	Break	
10:40 – 11:20	Block 3 (4X5' each + Q&A) - C1: OK-Net EcoFeed - C2: LIVESEED - C3: OK-Net Arable - C4: LIFT	- Bram Moeskops - Bram Moeskops - Bram Moeskops - Laure Latruffe
11:20 – 11:50	Block 4 (3X5' each + Q&A) - D1: UNISECO - D2: DIVERSify - D3: IWMPRAISE	- Gerald Schwarz - Alison Karley - Per Kudsk
11:50 – 12:00	AoB	

The target: Action 7: Centralise and coordinate the preparation of the Partnership proposal

- Take the lead in preparing the development of the Partnership
- Promoting the participation in the Partnership of as many countries as possible
- Collating inputs from all vertical activities
- Gathering inputs from several sources and feeding them into the Partnership “proposal” (template format pre-defined by EC)
- Link to the EC input paper for the Partnership:
https://ec.europa.eu/info/sites/info/files/research_and_innovation/research_by_area/documents/aellri-ec-input-partnership-discussion.pdf
- In parallel: SRIA

Progress of Drafting Group – Way to go

- 1st meeting in April
- Drafting Group = co-chairs, DG AGRI, KA and co-leads of all TFs (18 members)
- Review of „Overview of inputs“ (which TF and/or KA provide input in which part of the proposal)
- Review of Input paper: identify issues, problematics, synergies in the different parts
- Next meeting next week to revise the input paper and prepare a basic version consolidated with key issues to adress in the different parts
- To present to SCAR-AE on 15.06
- In perspective of SCAR Plenary (30.06)

SCAR AE & AKIS: collaboration opportunities & expectations

- Identify AKIS-related barriers and bottlenecks to the agroecology transition (e.g. from TF3: skills, career rewards) and how to overcome them
=> Partnership proposal section on barriers and bottlenecks + ways for ward
- How to best integrate AELLRI R&I instruments in the AKIS? Connections with on-going activities:
 - EIP-AGRI Operational groups & networks
 - Horizon multi-actor projects, in particular on AKIS (advisors, demo farms, multi-actor processes etc.)
 - Dissemination and exploitation channels
 - AKIS reflections on social innovations in farming**=> Partnership proposal section on coherence and synergies with other major policies**
- Tools and financial mechanisms for rewarding non-public/non-research participation in R&I funded activities + what after the partnership? (mainstreaming, long-term inclusion in policy)
=> Partnership proposal section on resources + exit strategy

Thank you for your attention!

Understandings of agroecology

Our point of departure:

=> Science of ecological processes applied to agricultural production systems

Distinctive aspects compared with other systems:

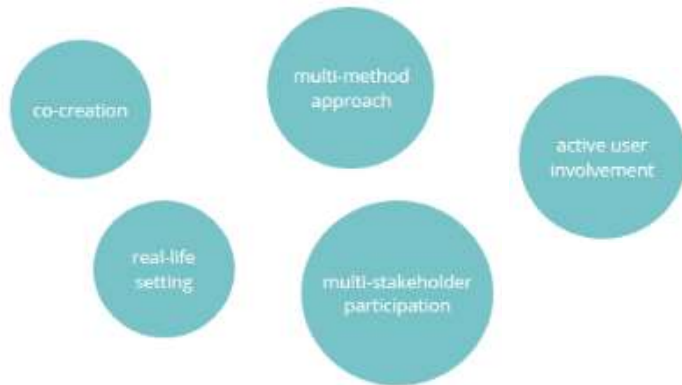
⇒ Full transformation of farming systems => potential to trigger transformation of entire agri-food system

⇒ Ecological, economic and social dimensions

⇒ Focus on the local/territorial level



Understandings of living labs





Living Labs (LLs) are defined as **user-centred**, open **innovation ecosystems** based on systematic **user co-creation** approach, **integrating** research and innovation processes **in real life communities** and settings.

(EnoLL)

Living Labs <-> Social innovation


Key additional features:

- Place-based/embedded in real working landscapes/communities, with more stakeholders
- More systematic use of a wide range of social sciences (behaviour, psychology, sociology etc.)
- Beyond projects, structuring the local/regional innovation ecosystem in the long-term

Purpose

What is ALL and why is it important?



Transdisciplinary approaches which involve farmers, scientists and other interested partners in the co-design, monitoring and evaluation of new and existing agricultural practices and technologies on working landscapes to improve their effectiveness and early adoption.

Findings

Finding 1 ALL is a comprehensive approach needed to deal with complex issues.

Finding 2 Applying and integrating the three components of ALL offers the greatest benefits.

Finding 3 Participating countries are applying components of ALL already.

Finding 4 Implementation and interest in ALL is increasing.